



### **Extra strong dock bumper ADB-ES**

A durable armoured bumper for demanding applications.

#### **Features**

- Suitable for intensive use of dock
- In two sizes available or in combined set
- Wear-resistant
- Deliverable in RAL 9005 or galvanized

### Materials

The ADB-ES dock bumper is built from a 8mm steel base assembly, a standard rubber bumper blocks and a 10mm bended armour plate. These dock bumpers are suitable for dock levellers with hinged and sliding lip.

The ADB-ES dock bumper is pre-assembled and can be ordered in RAL9005 (ES) or galvanised finish (ES-305).

### ADB-5010-ES

The standard sized armoured dock bumper, based on a 500x250x100 mm rubber bumper block.



Article number	Dimension WxHxD (mm)	Weight per pair (kg)	Finish
ADB-5010-ES	300x500x116	87	RAL 9005
ADB-5010-ES-305	300x500x116	87	Galvanized

### ADB-8510-ES

The extra large armoured dock bumper, mounted 350mm above platform. This dock bumper is special developed for applications with high trailers.

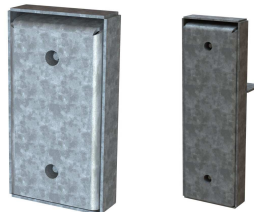


Article number	Dimension WxHxD (mm)	Weight per pair (kg)	Finish
ADB-8510-ES	300x900x116	160	RAL 9005
ADB-8510-ES-305	300x900x116	160	Galvanized

### ADB-855010-ES

A set of one ADB-5010-ES and one ADB-8510-ES dock bumper.

This combination of bumpers makes the dock suitable for high trailers while the entrance of the truck is still completely free on one side.



Article number	Dimension WxHxD (mm)	Weight per set (kg)	Finish
ADB-855010-ES	300x500x116 300x900x116	124	RAL 9005
ADB-855010-ES-305	300x500x116 300x900x116	124	Galvanized